

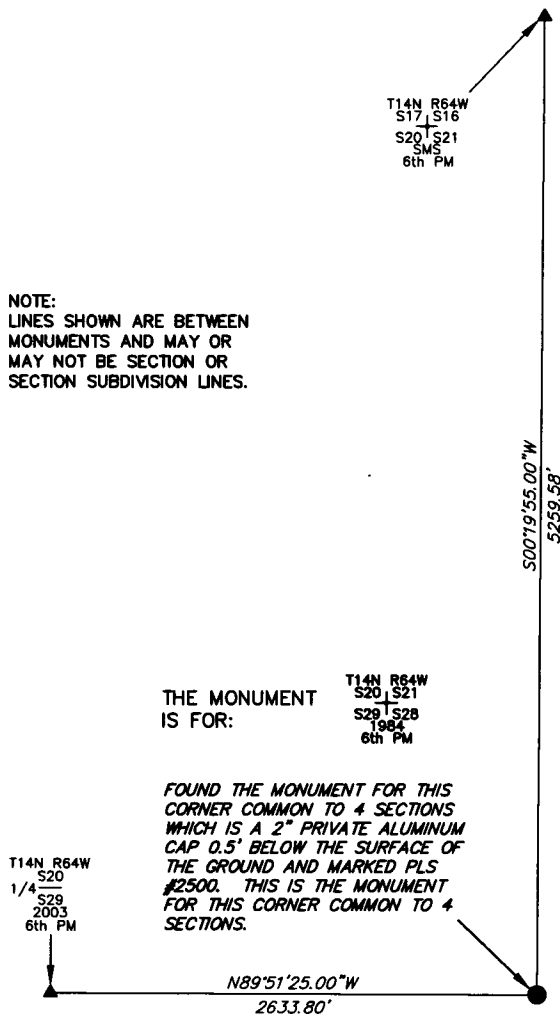
# State of Wyoming Corner Record

*CORNER PERPETUATION AND FILING ACT,*  
Regulations of the Board of Registration for Professional Engineers and Land Surveyors.)

Reverse side of this form may be used if more space is needed.

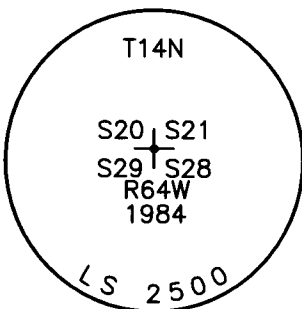
Record of original survey and citation of source of historic information (if corner is lost or obliterated). Description of corner monumentation evidence found and/or monument and accessories established to perpetuate the location of this corner. Sketch of relative location of monument, accessories, and reference points with course and distance to adjacent corner(s) (if determined in this survey). Method and rationale for reestablishment of lost or obliterated corner.

**NOTE:**  
LINES SHOWN ARE BETWEEN  
MONUMENTS AND MAY OR  
MAY NOT BE SECTION OR  
SECTION SUBDIVISION LINES.



THE MONUMENT  
IS FOR:

FOUND THE MONUMENT FOR THIS  
CORNER COMMON TO 4 SECTIONS  
WHICH IS A 2" PRIVATE ALUMINUM  
CAP 0.5" BELOW THE SURFACE OF  
THE GROUND AND MARKED PLS  
#2500. THIS IS THE MONUMENT  
FOR THIS CORNER COMMON TO 4  
SECTIONS.



THE MONUMENT IS MARKED

**CORNER MONUMENT SYMBOLS**

- RECORD IS FOR THIS CORNER MONUMENT.
- ▲ A RELATED CORNER OR WC MONUMENT.

SCALE 1"=1000'  
(EXCEPT IN  
TRIVIAL CASES)  
BEARINGS ARE RELATED  
TO WGS 84 WITH  
GPS OBSERVATIONS  
DRAWN BY: SM  
P.C. D. SHANKS  
COUNTY: LARAMIE



RECP #: 658205

Date of Field Work: 11/01/2013 Office Reference: \_\_\_\_\_

RECORDED 4/6/2015 AT 2:31 PM BK# 2437 PG# 924  
Debra K. Lathrop, CLERK OF LARAMIE COUNTY, WY PAGE 1 OF 1

**CROSS INDEX DIAGRAM**

A	1	2	3	4	5	6	7	8	9	10	11	12	13	14	15	16	17	18	19	20	21	22	23	24	25	A	
B																											B
C			6			5				4				3						2							C
D																											D
E																											E
F																											F
G						7				8				9					10								G
H																											H
J																											J
K																											K
L										18				17				16			15				14		L
M																											M
N																											N
O																											O
P																											P
Q										19				20				21			22				23		Q
R																											R
S																											S
T																											T
U																											U
V																											V
W																											W
X																											X
Y																											Y
Z	1	2	3	4	5	6	7	8	9	10	11	12	13	14	15	16	17	18	19	20	21	22	23	24	25	Z	

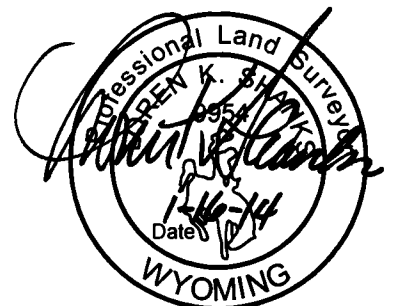
Firm/Agency, Address

UELS, LLC  
85 South 200 East  
Vernal, Utah 84078

Telephone Number: 435-789-1017

This corner record was prepared  
by me or under my direction  
and supervision.

SEAL & SIGNATURE



**CORNER COMMON TO 4 SECTIONS**

Corner Name: SOUTHEAST CORNER OF SECTION 20 Section: 20 T 14N R 64W ; 6TH P.M. Cross Index No.: R-9

SBRPEPLS/PLSW: March 1994 (CLCR...SJA)